

1/8" X 3/8"
BUTYL OR FOAM
GLAZING TAPE

HL-22 ALUM. CAP
MITERED & WELDED
AT CORNERS

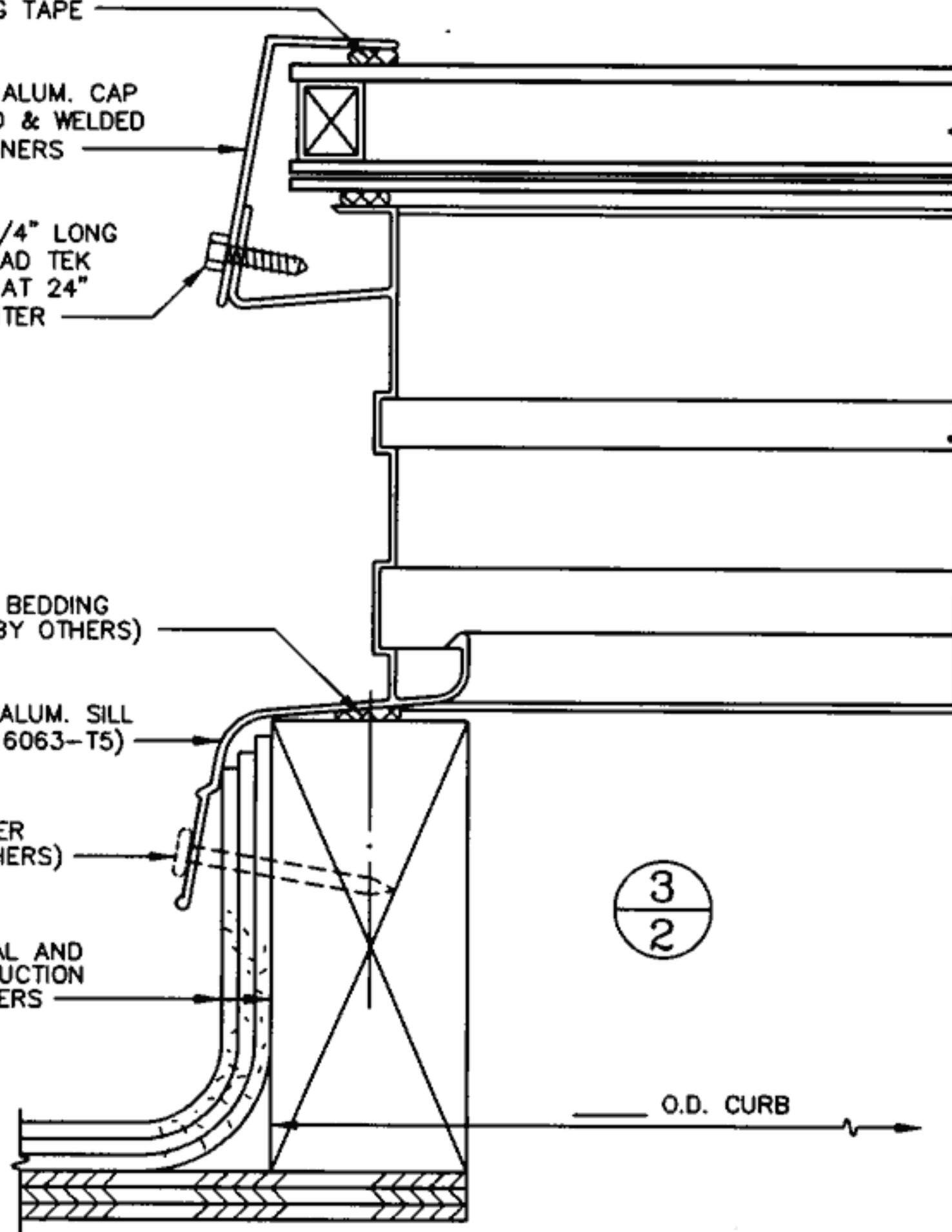
#8 X 3/4" LONG
HEX HEAD TEK
SCREW AT 24"
ON CENTER

MASTIC BEDDING
TAPE (BY OTHERS)

HL-35 ALUM. SILL
(ALLOY 6063-T5)

FASTENER
(BY OTHERS)

MATERIAL AND
CONSTRUCTION
BY OTHERS



1/8" X 3/8" BUTYL OR
FOAM GLAZING TAPE

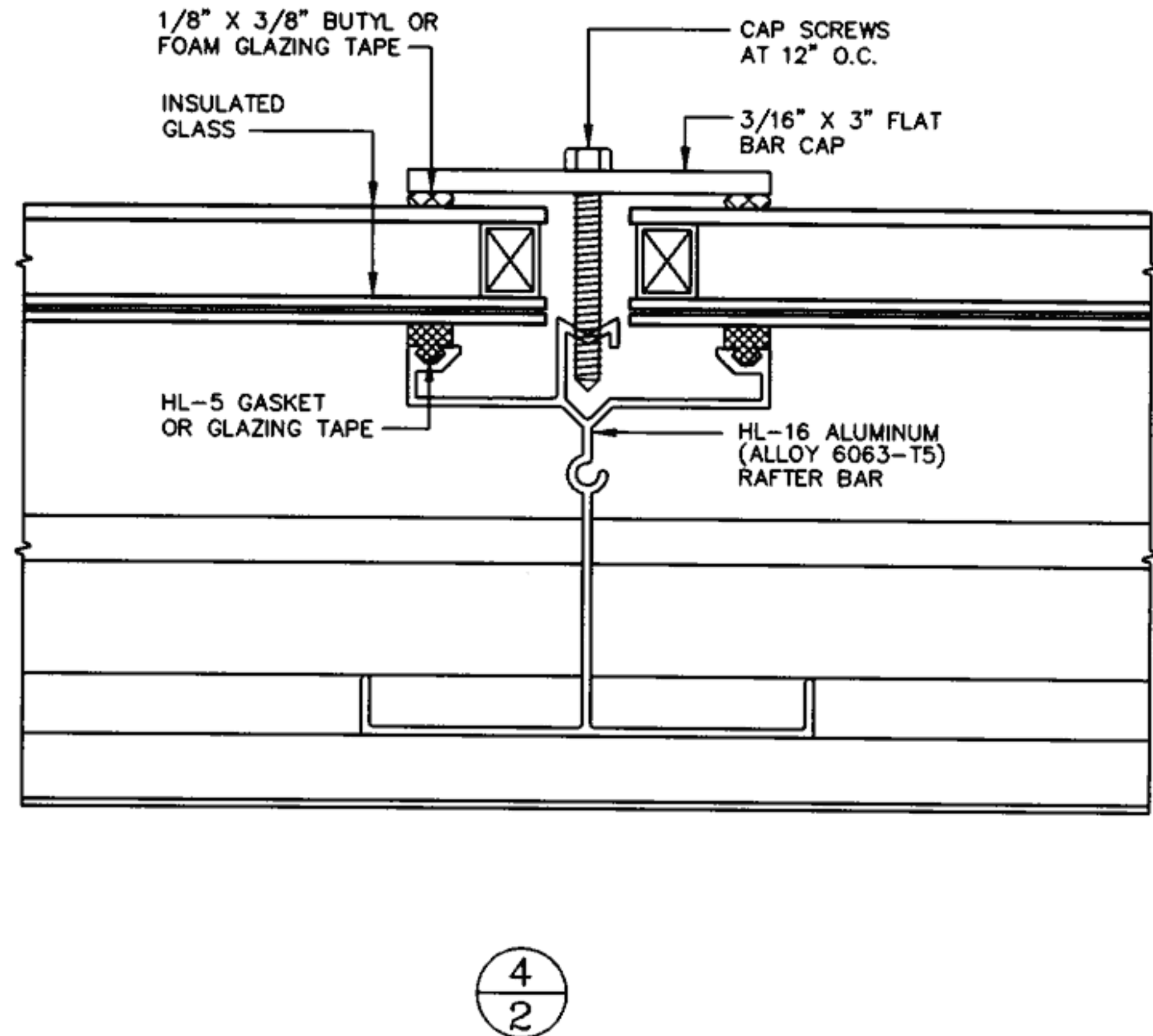
INSULATED
GLASS

CAP SCREWS
AT 12" O.C.

3/16" X 3" FLAT
BAR CAP

HL-5 GASKET
OR GLAZING TAPE

HL-16 ALUMINUM
(ALLOY 6063-T5)
RAFTER BAR



DOUBLE PITCH WITH PERPENDICULAR CURB (LONG SPAN)

1/2 FULL SCALE

- o GLASS, INSULATED
- o I-BEAM RAFTER (HL-16)
- o MIN. 4 IN 12 PITCH RECOMMENDED

FINISH :

PROJECT :

FILE : HL35DIG9

GLAZING :

CUSTOMER :

REVISIONS

FIELD GLAZED

FIELD MEASUREMENTS
AND INSTALLATION BY _____

ARCHITECT :

SHOP GLAZED

O'KEEFFE'S, INC.

75 WILLIAMS AVENUE
SAN FRANCISCO, CA 94124
TEL.: (415) 822-4222
FAX: (415) 822-5222

DRAWN :

JOB NO.

DATE :

SHEET :

2 OF 2